



# MTRI's Support to the North Slope Science Initiative

[www.northslope.org](http://www.northslope.org)

## ALAKSA'S NORTH SLOPE

The North Slope is a region found in the far north of Alaska, bordered by the foothills of the Brooks Range to the south and the Arctic Ocean to the north. The region encompasses 89,000 square miles, comprised of diverse and unique ecosystems. This area, however, is most well-known for its oil and gas fields, which are among the largest in the United States. The North Slope of Alaska is thought to have the greatest remaining oil potential of any onshore area in the United States.

## NORTH SLOPE SCIENCE INITIATIVE

The North Slope Science Initiative (NSSI) is an inter-agency effort designed to provide a consistent approach to high-caliber Science across the North Slope. The Initiative seeks to increase collaboration at the local, state, and federal levels to address research, inventory, and monitoring needs as they relate to energy development activities on the North Slope.



## NSSI PORTAL

[www.northslope.org](http://www.northslope.org)

MTRI has created a web portal to support the NSSI. The purpose of the portal is to serve as a consolidated and centralized source of reference information for all stakeholders, including land and resource managers, scientists, and the general public. Additionally, this portal is designed to facilitate digital collaboration and information sharing. Individuals and agencies have the ability to securely post data and documents related to the North Slope, thereby enhancing communication and improving research and management efforts.

## NSSI OVERSIGHT GROUP

The stated mission of the Oversight Group is to "enhance the quality and quantity of the scientific information available for aquatic, terrestrial, and marine environments on the North Slope and to make this information available to decision makers,



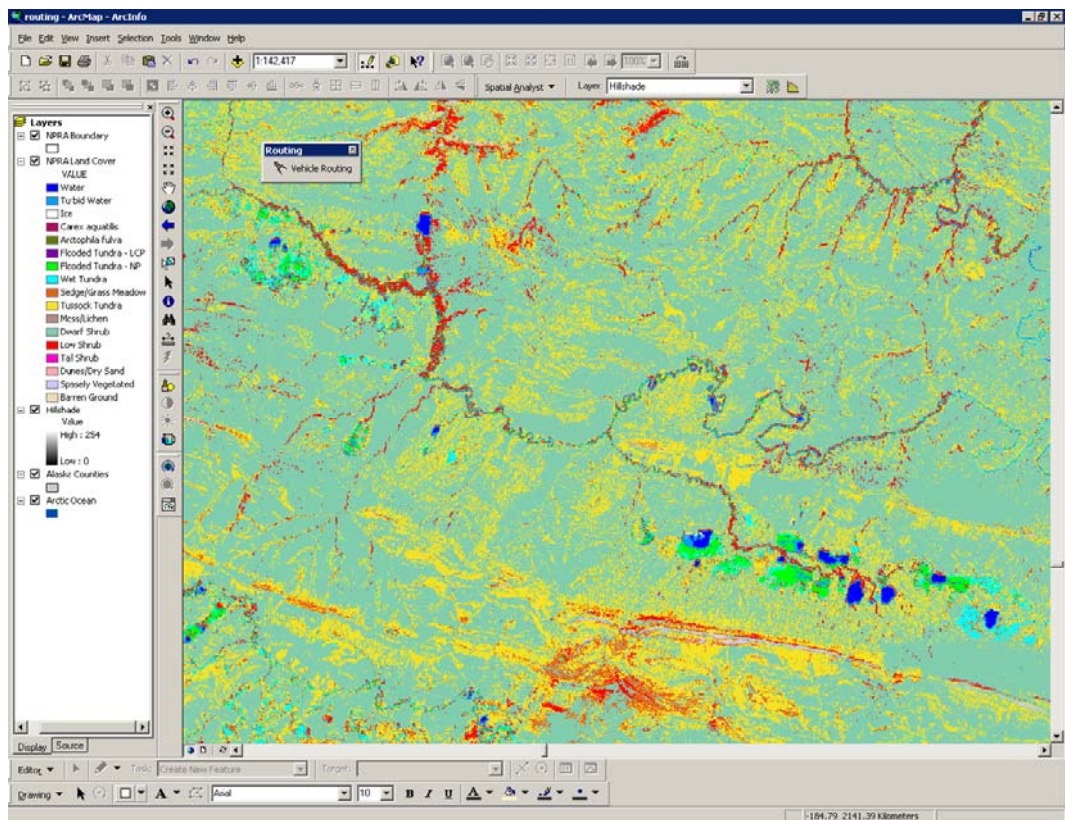
governmental agencies, industry, and the public. This mission will be accomplished through a coordinated and integrated approach to conducting inventory, monitoring, and research activities on the North Slope.

The Oversight Group consists of the following member agencies with voting privileges: the State Director of the Bureau of Land Management; the Regional Directors of the U.S. Fish and Wildlife Service, National Park Service, National Marine Fisheries Service, and the Minerals Management Service; the Commissioners of the Alaska Department of Natural Resources and the Alaska Department of Fish and Game; the Arctic Slope Regional Corporation President; and the Mayor of the North Slope Borough. These agencies represent the principal governmental agencies at the regional, state, and federal levels with management responsibilities for public lands, fish, and wildlife on the North Slope. In addition, the U.S. Geological Survey and the U.S. Department of Energy participate on the Oversight Group as the primary advisory agencies on science issues related to the North Slope, but do not have voting privileges.

## GEOGRAPHIC INFORMATION SYSTEMS (GIS)

MTRI and the BLM collaborated to support the NSSI by gathering all spatial data relevant to the North Slope of Alaska. MTRI searched exhaustively for available data and compiled it into one comprehensive database for use by managers, planners, scientists, and the general public. This database is organized into categories to facilitate easier retrieval. Prior to the NSSI, GIS data was scattered amongst various agencies, organizations, and companies.

MTRI also developed a vehicle routing tool as an example of a customized GIS utility. The tool's purpose is to create a path for land vehicles, such as rollasons, and air vehicles, such as helicopters, to avoid sensitive areas. Routing stipulations have the ability to be modified to avoid sensitive areas (e.g., native villages where noise generated by machinery is prohibited, sensitive vegetation, and animal habitats) by a greater distance or to avoid those areas altogether.



### For additional information contact:

Dr. Robert Shuchman  
Institute Co-Director  
(734) 913-6860  
shuchman@mtu.edu

Liza Liversedge  
(734) 913-6869  
liza.liversedge@mtu.edu

MTRI  
3600 Green Court  
Suite 100  
Ann Arbor, MI 48105

[www.mtri.org](http://www.mtri.org)